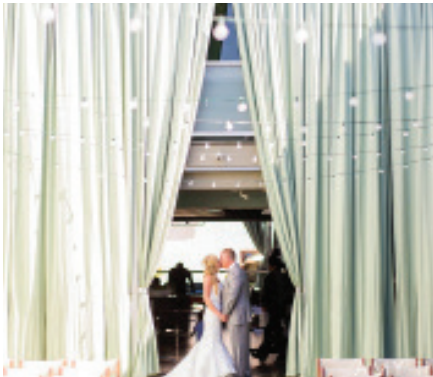
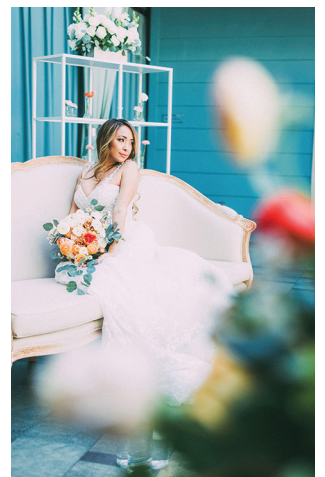




shade  
MANHATTAN BEACH

*Weddings & Events*



---

## *A Place To Gather*

---

Shade is the perfect place to celebrate any event, from a small gathering to grand gala. Manhattan Beach's first luxury boutique hotel, nestled downtown, provides an exquisite backdrop for bar mitzvahs, birthdays, anniversaries and weddings alike. Picture your event in a unique space that transcends the traditional concept of indoors and outdoors. Our signature space, the Courtyard, is the heart of the hotel. This extraordinary open-air venue offers the flexibility to plan the event of your dreams. An abundance of natural light provides a lively yet gentle environment in which to celebrate. Our professional and experienced staff is as flexible as the space. They know how to turn your vision into a reality.

---



# *the courtyard* THE HEART OF THE HOTEL



Picture your special day in a unique space that transcends the traditional concept of indoors and outdoors. Our signature space, the Courtyard, is the heart of the hotel. This extraordinary and unique environment offers the flexibility to accommodate any style you wish! Tables and seating arrangements can be configured in a number of different ways. An abundance of natural light provides a lively, yet gentle environment in which to celebrate, day or night. Our professional and experienced staff is as flexible as the space. They know how to turn your vision into a reality.

*the courtyard* THE HEART OF THE HOTEL



*the courtyard* square feet: 1140    seated: 150    cocktail: 175

*zinc@shade lounge* WHERE MEMORIES ARE MADE



Known for our signature style and quality service, you can rest assured that zinc@shade will provide the best experience possible, planning your special day. Our Events Team will help bring your vision to life, the way you have dreamt it, with every detail perfect. We also offer multiple setups for dance floors and have acoustics fit for the perfect band or DJ to keep your guests dancing all night long. Experience the perk of a stress-free wedding at zinc@shade. Come see for yourself how we can exceed all of your expectations on your day.

*zinc@shade lounge* WHERE MEMORIES ARE MADE



*zinc@shade lounge* square feet: 1334 seated: 60 cocktail: 150

*zinc@shade terrace* A BREATH OF FRESH AIR



Extending from zinc@shade, our breezy, open-air Terrace is perfect for an intimate party. To ensure your privacy, our luxuriously oversized curtains can be drawn, creating quiet and serenity. The Terrace is the perfect venue for a welcome reception, casual brunch, or stylish baby shower. Whatever the occasion, the zinc@shade Terrace provides an atmosphere of elegant calm that will be sure to impress your guests.



*zinc@shade terrace* A BREATH OF FRESH AIR



*zinc@shade terrace* square feet: 940 seated: 48 cocktail: 60

# *the skydeck* UP ON THE ROOF



Ascend the stairs and discover 365 days of sunlight at our open-air poolside retreat. Perfect for your cocktail hour and/or ceremony, our intimate rooftop Skydeck allows your party to breathe in the fresh ocean air and experience the breathtaking views of Manhattan Beach. Our delicate strung lighting and sound system set the mood while the sun dips into the ocean and guests sip on fine wines and unique bites. The Skydeck will provide you and your guests a memorable experience under the sun or stars.

*the skydeck* UP ON THE ROOF



*the skydeck* square feet: 950    seated: 48    cocktail: 100

# wedding ceremony & receptions

## WEDDING CEREMONY

- complimentary Deluxe Spa Room for night of wedding\*
- ivory leather and wood chairs
- microphone, stand and speaker system
- gift and guestbook table

- easel for framed photo or signage
- ivory floor-length linens
- LED tea light candles and mercury glass votives
- 60-minute wedding rehearsal location [based on availability]
- set-up and breakdown service

*\*reception must be hosted at Shade Hotel Manhattan Beach*

## RECEPTION PACKAGES

- place settings to include: fine white china, stemware, silverware and an ivory linen napkin
- high top cocktail tables, 72" round tables, cake table, DJ table
- ivory leather and wood chairs
- floor length-ivory linens

- use of hotel table numbers and stands
- customized floor plan
- LED tea light candles and mercury glass votives
- banquet captains, bartenders and servers
- set-up and breakdown service

## THE SURF

starting at \$95++ per guest

a choice of one stationary appetizer display, two carving stations, plus two sides and one salad display

## THE SAND

starting at \$105++ per guest

a choice of three tray-passed hors d'oeuvres, one plated starter, one plated entrée, plus a selection of three mini desserts presented family-style

## THE MANHATTAN

starting at \$120++ per guest

a choice of three tray-passed hors d'oeuvres, one plated starter, two plated entrées, plus three dessert options for your guests to enjoy

## ENHANCEMENTS

- coffee station
- wedding cake from Torrance Bakery
- napkins in the color of your choice
- champagne toast
- one glass of red or white wine with dinner
- custom welcome signage
- elaborate welcome table display
- signature welcome cocktail station
- whiskey and wine tasting [evening before the event]
- valet parking [event or overnight, per vehicle]
- specialty linen upgrade
- custom welcome signage

- simple wedding floral arrangements [small or large]
- personalized video streaming
- elegant uplighting and decor
- bistro lights hung in the Courtyard
- draped fabric hung in the Courtyard
- personalized projected monogram design
- consult with floral designer
- music and entertainment
- coat check
- customized backdrop for photo booth or dessert display
- interactive photobooth and props
- changing room: includes mimosa bar, full-length mirror, clothing racks, lounge furniture and make up stations

*all packages are customizable; prices are exclusive of service charge*



## EVENT TIMES

**Green Room • Zinc Terrace • Zinc Lounge • Courtyard:**

Daytime events are typically from 10 am to 3 pm, and evening events are from 5 pm to 10 pm and 6 pm to 11 pm on weekends. An additional hour can be booked up to midnight for a fee of \$1000 over and above the minimum. Wedding ceremonies plus receptions are typically held in 5 hour blocks. Reception-only events and non-wedding social events are typically held in 4 hour blocks.

**Skydeck:**

Evening events are typically from 5 pm to 10 pm. Wedding ceremonies + receptions are typically held in 5 hour blocks. Reception-only events and non-wedding social events are typically held in 4 hour blocks.

## DEPOSITS

A 50% deposit is required in order to confirm your reservation and hold your date. The estimated final balance is due 12 business days prior to your event. Initial deposit is non-refundable.

## PRICING

All food and beverage prices are based on current market value and are subject to change. Final pricing will be confirmed 12 days prior to your event. Current service charge and applicable sales tax will be applied.

## PARKING

Alternative parking is available for your guests in the above and underground parking structures. Valet parking services are available.

*private retreat*

DESTINATION WEDDING PRIVATE RETREAT



ALL  
YOURS

Make Shade your own private wedding retreat. This hotel sleeping rooms buyout includes all 38 luxury rooms (38 on the evening of your wedding and 18 on either shoulder date), a Skydeck rehearsal dinner, use of the Courtyard, Lounge and Terrace for an afternoon or evening ceremony and reception and brunch to conclude your ultimate wedding celebration. During their stay guests will enjoy the rooftop Skydeck, relaxation pool, complimentary beach cruising bicycles, beach breakfast and complimentary Wi-Fi.

REQUIRED

#### Guest Room Buyout

- pre-event or post-event shoulder dates: 18 guest rooms
- day of your event: all 38 guest rooms

INCLUDES

- entire hotel during your wedding
- minimums waived for use of the Skydeck night prior to your wedding
- event space for a farewell brunch the following morning



# *day of dressing room* PREPARE FOR YOUR BIG DAY



## DRESSING ROOM

Use one of our spacious and modernly designed event spaces as your personal beauty suite! A wall of sliding glass Lanai doors will flood the room with natural light. We will provide you with the perfect environment to get ready for the big day.

- sparkling wine
- 10 flute glasses
- room service menus
- floor-length mirror
- individual mirrors
- hair and makeup barstools
- auxiliary music hookup
- felt-tipped hangers
- gown rack
- gown steamer





# *guest rooms* SLEEP IN STYLE



Our 38 rooms provide a luxurious, relaxing, and enjoyable retreat for you and your guests. All of our rooms and suites are fully-loaded with Tempur-Pedic® beds, in-suite soaking tubs with chromatherapy lumination, plush bathrobes and complimentary Wi-Fi. Visit [mb.shadehotel.com](http://mb.shadehotel.com) for a complete list of amenities.



- Deluxe Spa Rooms
- Deluxe Spa Suites
- Napa Suite
- Penthouse Suite
- Executive Studio Suite

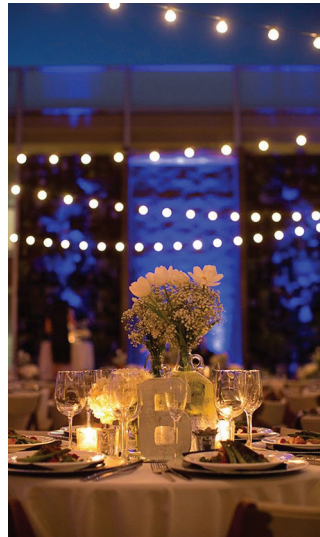
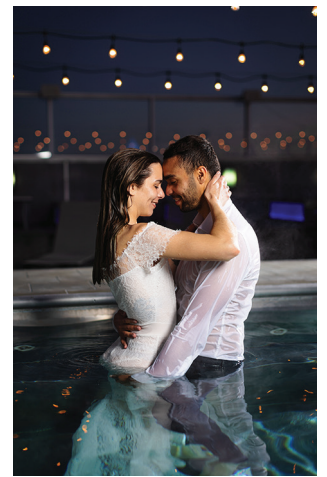
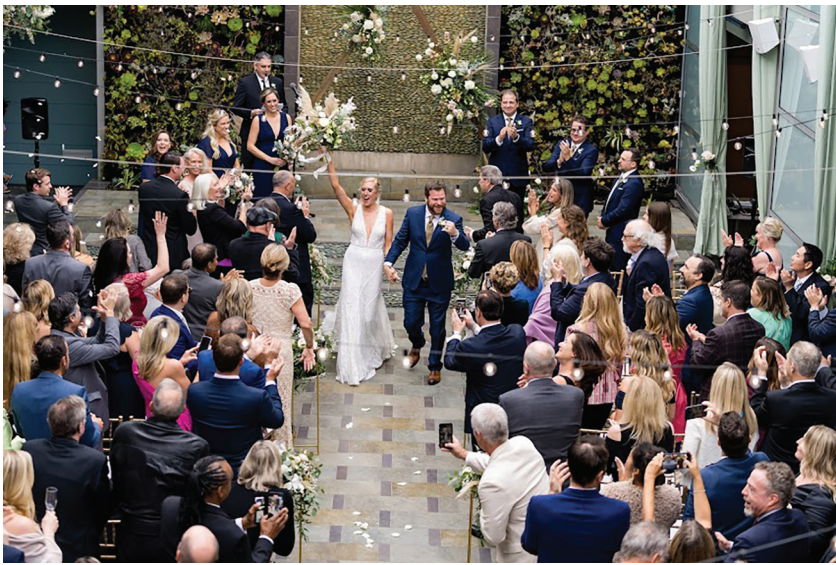


## GUEST ROOMS

**Individual Rooms:** A discounted rate will be offered to your guests for the weekend of your event. Contact your Event Manager to make these arrangements. Complimentary overnight accommodation in a Deluxe Spa Room will be provided for the wedding couple on the wedding night with a ceremony package. [All rooms and prices are subject to availability]

**Blocked Rooms:** To guarantee your guests can stay at Shade, we offer you a special block rate. We require a contract to hold your space. Please inquire for details.







---

# *Get In Touch!*

---

**Start Your Planning Today**

**Phone:** 310.546.4995 x2 | **Fax:** 310.546.4985

**Email:** [events@shadehotel.com](mailto:events@shadehotel.com)

[www.mb.shadehotel.com](http://www.mb.shadehotel.com)

1221 N. Valley Drive, Manhattan Beach, CA 90266

---





shade<sup>®</sup>  
MANHATTAN BEACH

